



1 Alexandra Road

Hulme, Manchester, M16 7BU

Guide Price £139,950



1 Alexandra Road, Hulme, Manchester, M16 7BU

TENANTS IN SITU, IDEAL FOR INVESTORS

Well, ahead of the game, this 2 DOUBLE BEDROOM PENTHOUSE apartment with PRIVATE BALCONY and GREAT VIEWS will astound, whilst satisfying the environmental concerns that are as big an issue today as when this AWARD WINNING development was conceived. This impressive sustainable scheme, designed by MBLA Architects, achieved Code for Sustainable Homes Level 3. The project featured as many energy savings and recycling systems as possible including, solar panels, high grade sound and heat insulation, energy saving white goods, central heating systems, low flow taps, dedicated low energy light fittings and a rainwater recycling installation which provided non drinking water usage such as toilet flushes and washing machine supplies. In excess of 95% of the timber used was from managed renewable sources. Little Alex won an award at the MEN Property Awards for Sustainability Design and Construction, 2008

Now is your time!



Entrance Hall

Open Plan Living Area

23'2 x 15'10 (7.06m x 4.83m)

Balcony

28'0 (8.53m)

Bedroom One

11'8 x 9'9 (3.56m x 2.97m)

Bedroom Two

11'8 x 7'1 (3.56m x 2.16m)

Bathroom

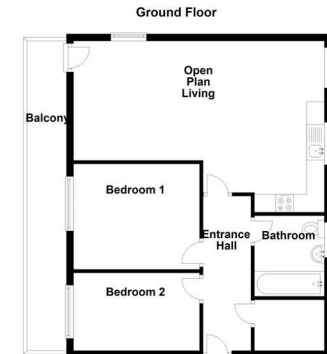
Parking

Agent's notes

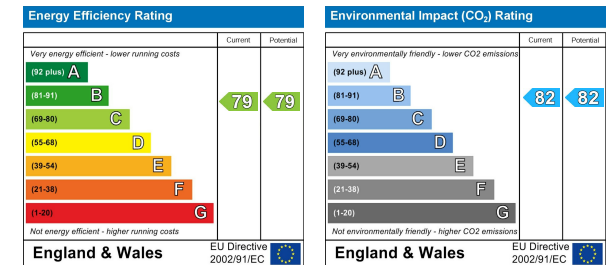
Area Map



Floor Plan



Energy Efficiency Graph



These particulars, whilst believed to be accurate are set out as a general outline only for guidance and do not constitute any part of an offer or contract. Intending purchasers should not rely on them as statements of representation of fact, but must satisfy themselves by inspection or otherwise as to their accuracy. No person in this firm's employment has the authority to make or give any representation or warranty in respect of the property.

58 Beech Road, Chorlton, Manchester, M21 9EG

Tel: 0161 881 8228

Email: homes@sherlockhomes4u.com

www.sherlockhomes4u.com